

Acidentes ocorridos nas Rodovias Federais em 2005.

## **Rodovia BR 116 – CE**

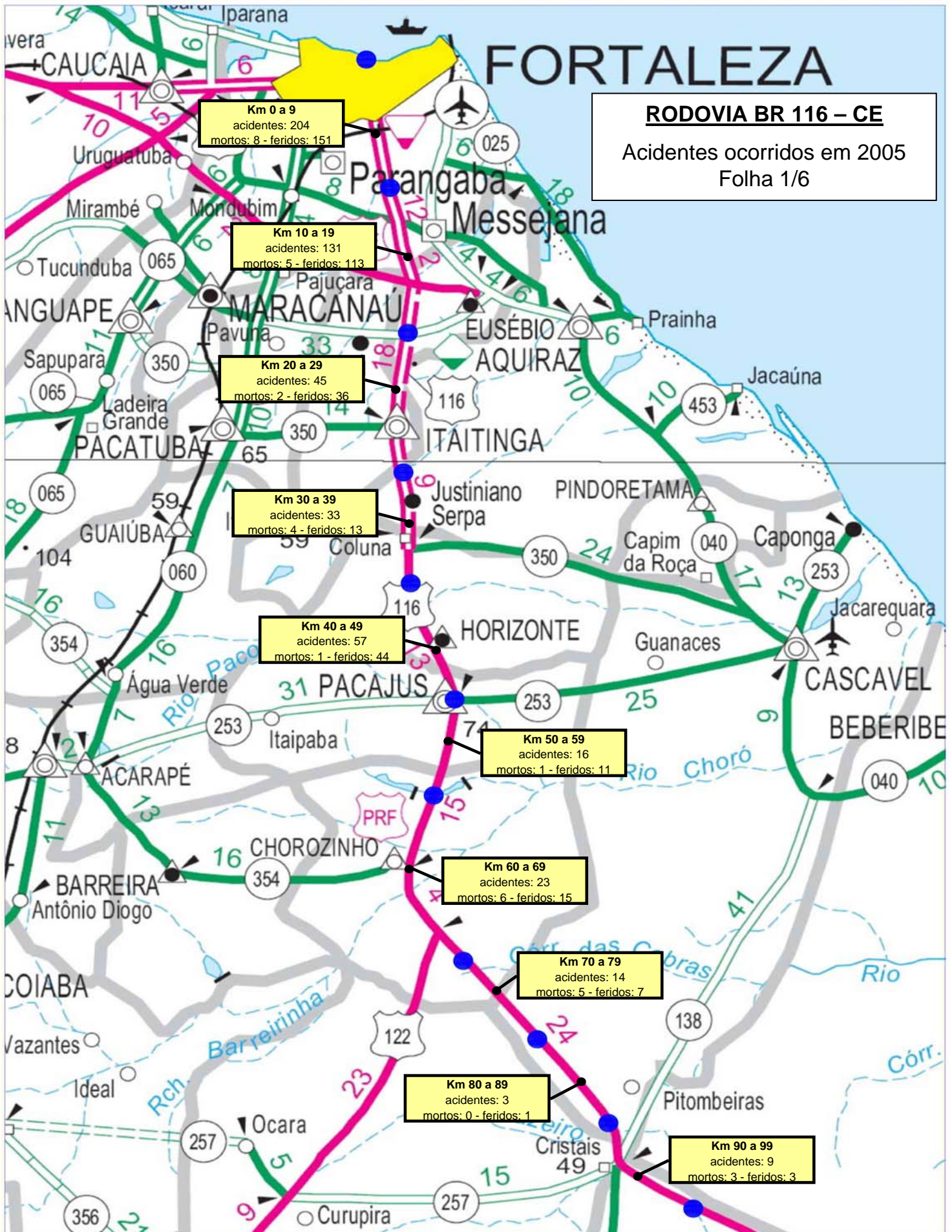
(Extensão 546 Km)

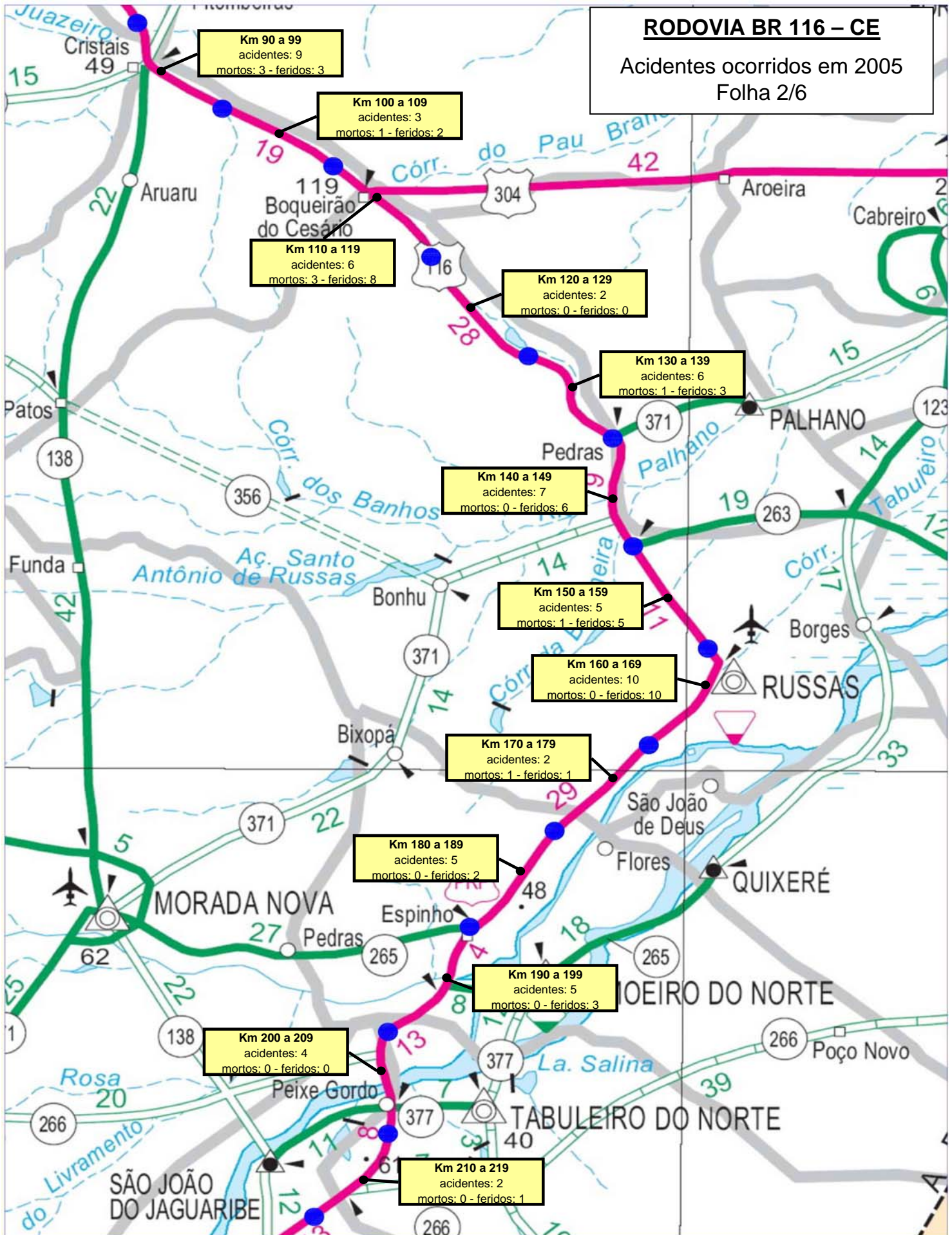
### ***Resumo***

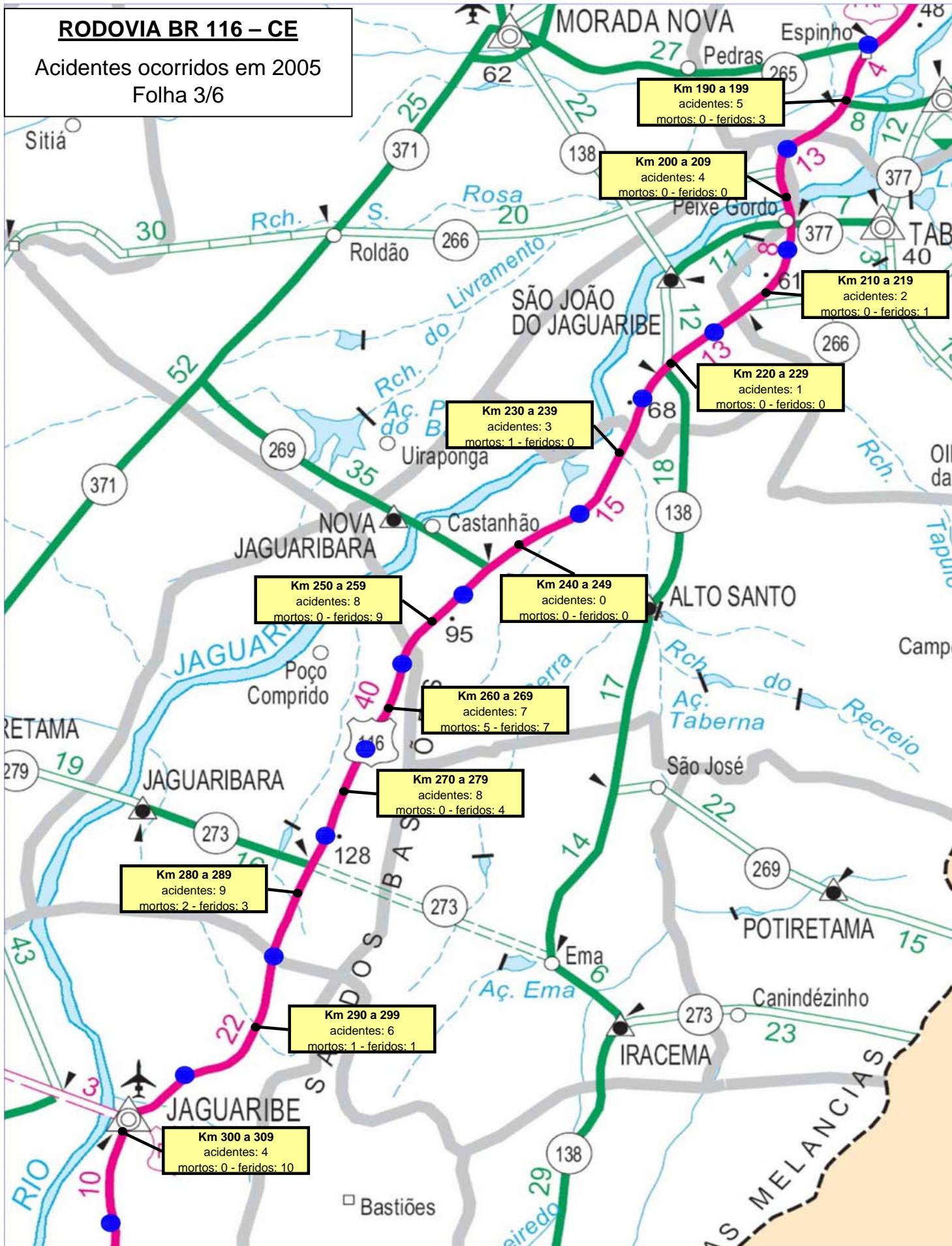
773 Acidentes

75 Vítimas Fatais

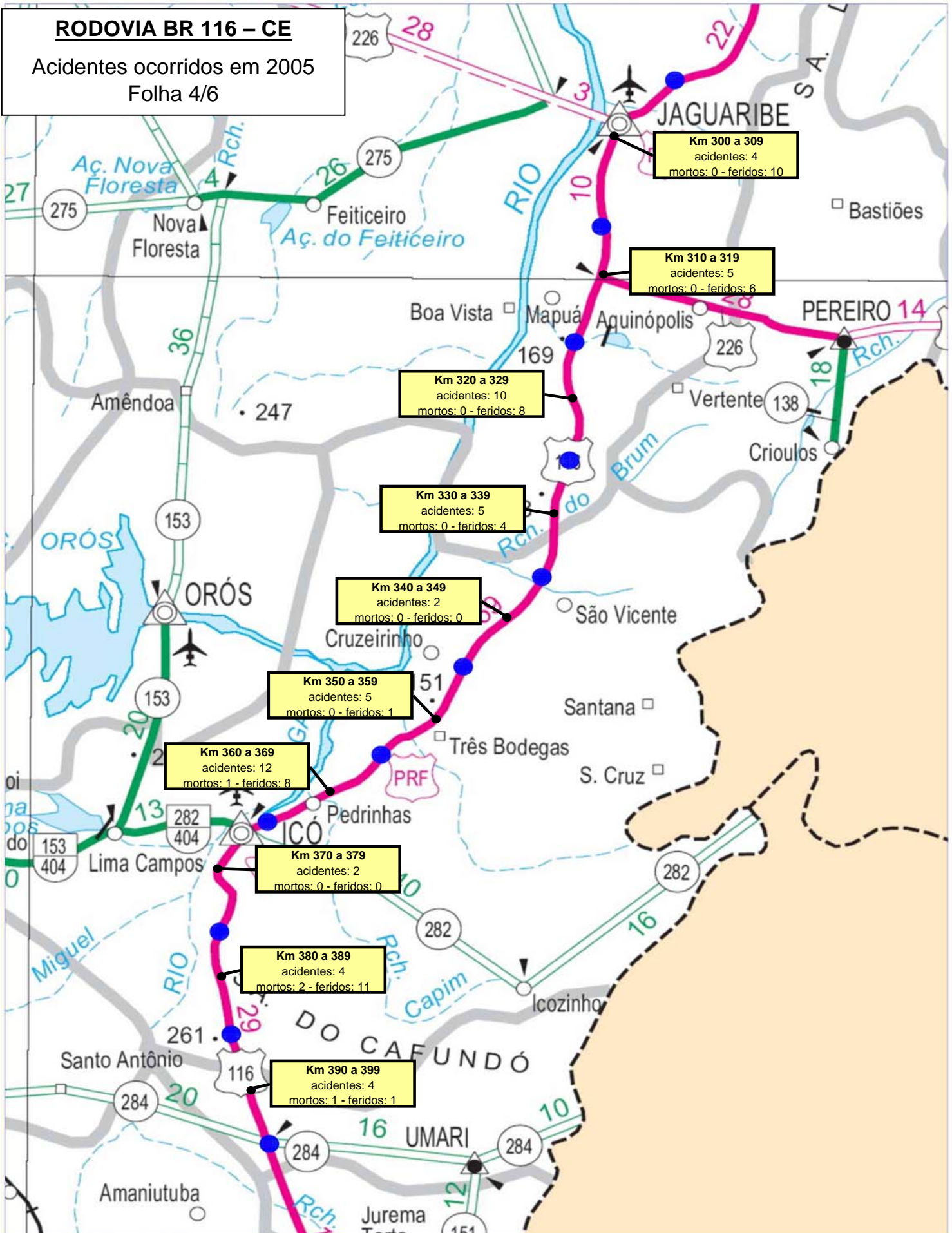
580 Feridos



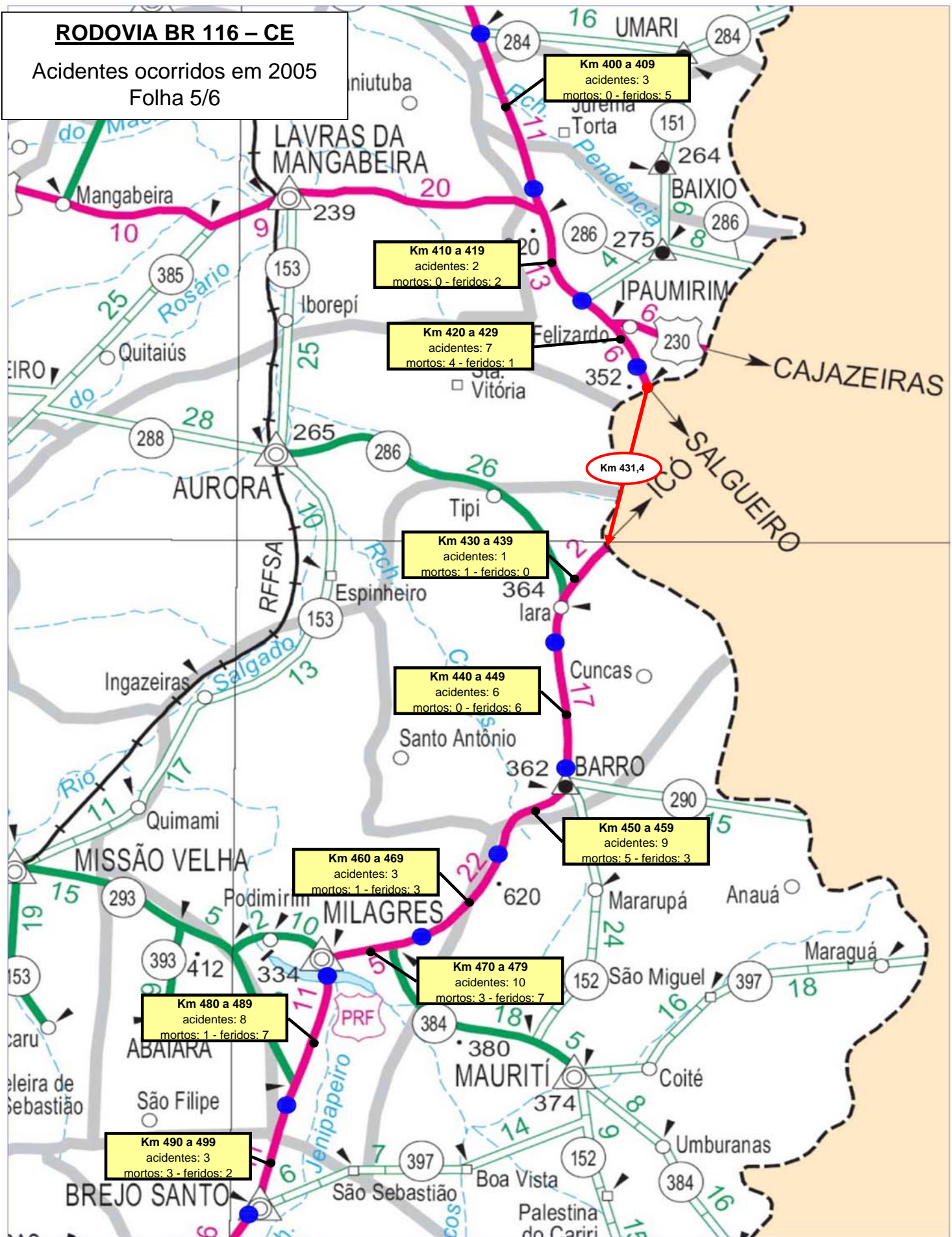




**RODOVIA BR 116 – CE**  
Acidentes ocorridos em 2005  
Folha 4/6

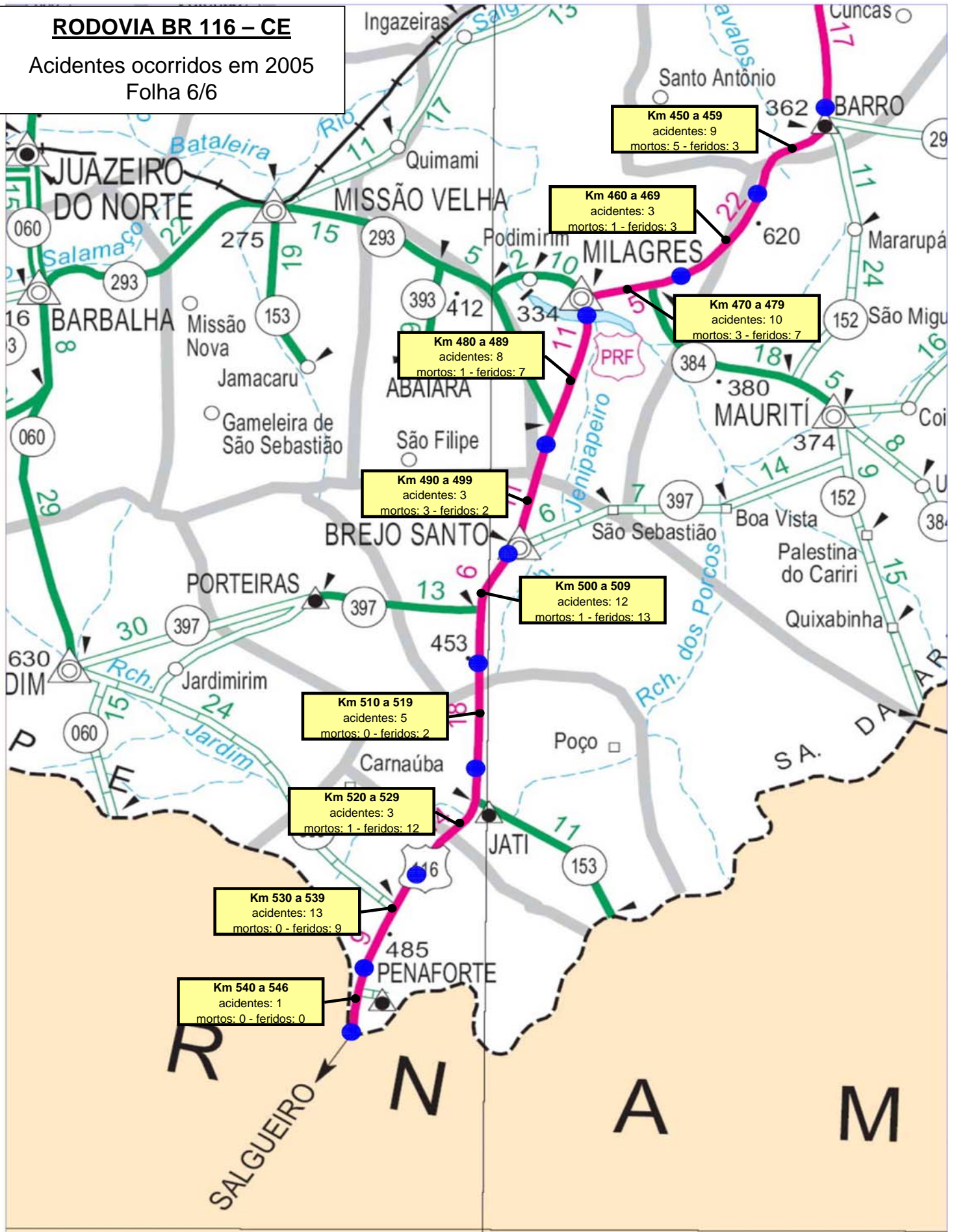


**RODOVIA BR 116 – CE**  
 Acidentes ocorridos em 2005  
 Folha 5/6



**RODOVIA BR 116 – CE**

Acidentes ocorridos em 2005  
Folha 6/6

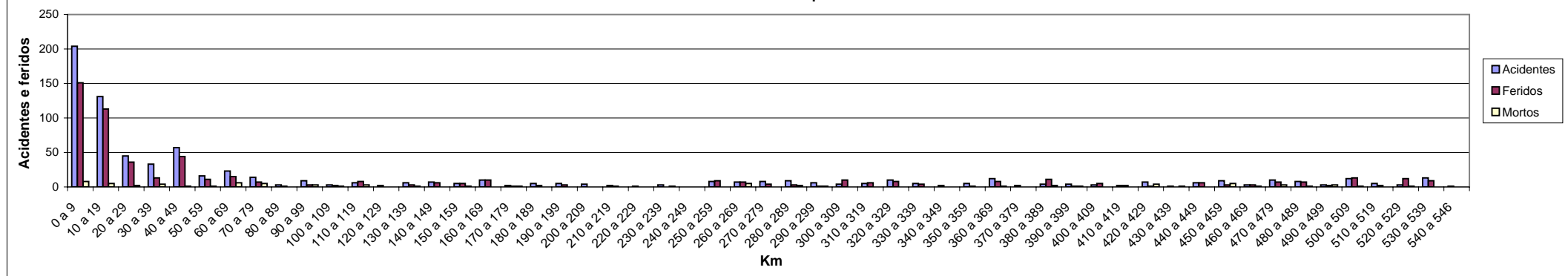


Rodovia BR 116 - CE

Acidentes ocorridos em 2005.

Km	0 a 9	10 a 19	20 a 29	30 a 39	40 a 49	50 a 59	60 a 69	70 a 79	80 a 89	90 a 99	100 a 109	110 a 119	120 a 129	130 a 139	140 a 149	150 a 159	160 a 169	170 a 179	180 a 189	190 a 199	200 a 209	210 a 219	220 a 229	230 a 239	240 a 249	250 a 259	260 a 269	270 a 279	280 a 289	290 a 299	300 a 309	310 a 319	320 a 329	330 a 339	340 a 349	350 a 359	360 a 369	370 a 379	380 a 389	390 a 399	400 a 409	410 a 419	420 a 429	430 a 439	440 a 449	450 a 459	460 a 469	470 a 479	480 a 489	490 a 499	500 a 509	510 a 519	520 a 529	530 a 539	540 a 546
Acidentes	204	131	45	33	57	16	23	14	3	9	3	6	2	6	7	5	10	2	5	5	4	2	1	3		8	7	8	9	6	4	5	10	5	2	5	12	2	4	4	3	2	7	1	6	9	3	10	8	3	12	5	3	13	1
Feridos	151	113	36	13	44	11	15	7	1	3	2	8	0	3	6	5	10	1	2	3	0	1	0	0		9	7	4	3	1	10	6	8	0	11	1	5	2	1	0	6	3	3	7	7	2	13	2	12	9	0				
Mortos	8	5	2	4	1	1	6	5	0	3	1	3	0	1	0	1	0	1	0	0	0	0	0	1		0	5	0	2	1	0	0	0	0	0	1	0	2	1	0	0	4	1	0	5	1	3	1	3	1	0	1	0	0	

Acidentes e feridos em 2005 por trecho de 10 km



Km	0 a 9	10 a 19	20 a 29	30 a 39	40 a 49	50 a 59	60 a 69	70 a 79	80 a 89	90 a 99	100 a 109	110 a 119	120 a 129	130 a 139	140 a 149	150 a 159	160 a 169	170 a 179	180 a 189	190 a 199	200 a 209	210 a 219	220 a 229	230 a 239	240 a 249	250 a 259	260 a 269	270 a 279	280 a 289	290 a 299	300 a 309	310 a 319	320 a 329	330 a 339	340 a 349	350 a 359	360 a 369	370 a 379	380 a 389	390 a 399	400 a 409	410 a 419	420 a 429	430 a 439	440 a 449	450 a 459	460 a 469	470 a 479	480 a 489	490 a 499	500 a 509	510 a 519	520 a 529	530 a 539	540 a 546
Mortos	8	5	2	4	1	1	6	5	0	3	1	3	0	1	0	1	0	1	0	0	0	0	0	1	0	0	5	0	2	1	0	0	0	0	0	1	0	2	1	0	0	4	1	0	5	1	3	1	3	1	0	1	0	0	

Mortos em 2005 por trecho de 10 km

